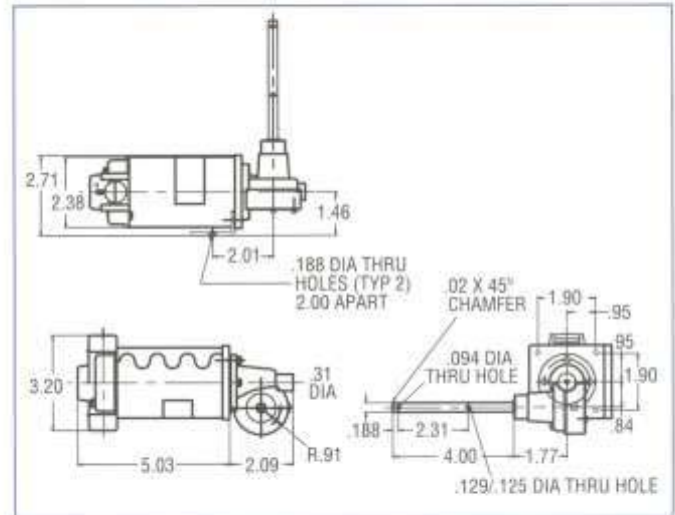


VW06

Overhung load .25 lbs.,
.75" from output boss

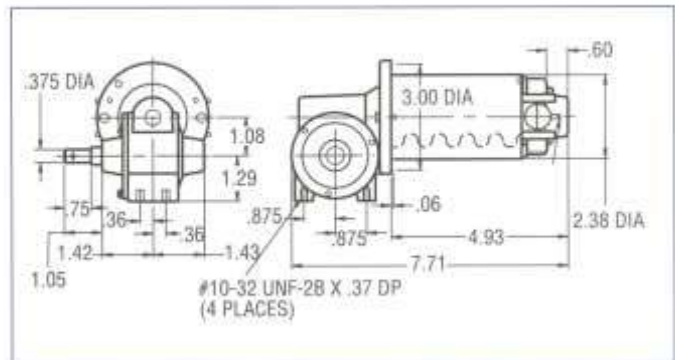


Input Motor	Gearmotor Characteristics	Standard Gear Ratios							
		5	10	15	20	25	30	35	40
2050 RPM	F.L. Speed (RPM)	410	205	137	103	82	68	59	51
	F.L. Torque (in-lbs.)	4	7	9	11	12	12	15	17

Options • Available 12 - 180 Volt • Replaceable Brushes • Double Output Shaft

VW26

Overhung load 50 lbs.,
.75" from output boss

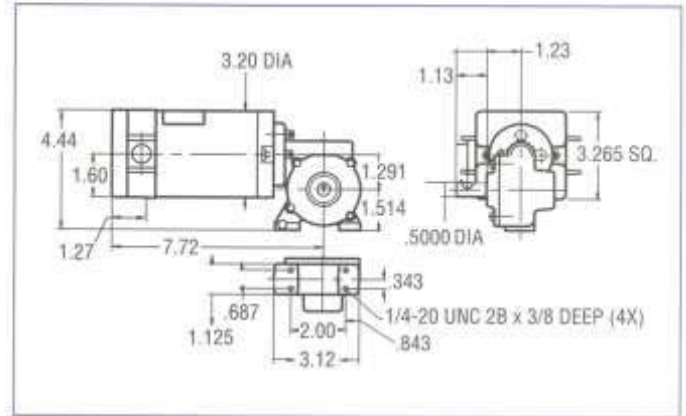


Input Motor	Gearmotor Characteristics	Standard Gear Ratios								
		2	4	10	15	20	30	40	50	60
1750 RPM	F.L. Speed (RPM)	875	437	175	117	88	58	44	35	29
	F.L. Torque (in-lbs.)	2	4	13	17	23	26	28	30	38

Options • Available 12 - 180 Volt • Replaceable Brushes • Double Output Shaft

VW185

Overhung load 100 lbs.,
.75" from output boss

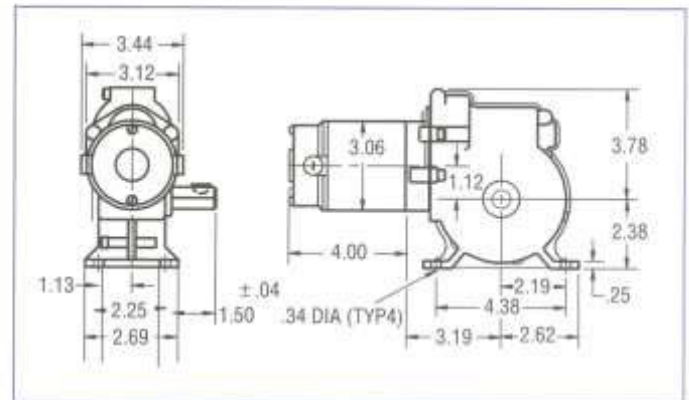


Input Motor	Gearmotor Characteristics	Standard Gear Ratios							
		5	10	15	20	30	40	50	60
1725 RPM	F.L. Speed (RPM)	345	175	115	86	58	43	35	29
	F.L. Torque (in-lbs.)	26	35	50	65	80	100	120	135

Options • Available 12 - 180 Volt • Replaceable Brushes • Double Output Shaft • Electro-Magnetic Brake

VW07

Overhung load 250 lbs.,
1" from output boss

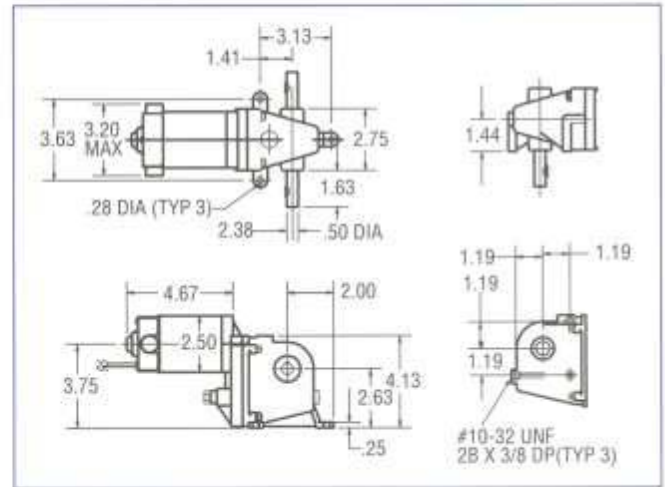


Input Motor	Gearmotor Characteristics	Standard Gear Ratios	
		148	295
3300 RPM	F.L. Speed (RPM)	22	11
	F.L. Torque (in-lbs.)	120	155
1650 RPM	F.L. Speed (RPM)	11	6
	F.L. Torque (in-lbs.)	200	260

Options • Available 12 - 90 Volt • Replaceable Brushes • Internal Brushes • Double Output Shaft • Electro-Magnetic Brake • Integral Speed Control

VW23

Overhung load 200 lbs.,
1" from output boss

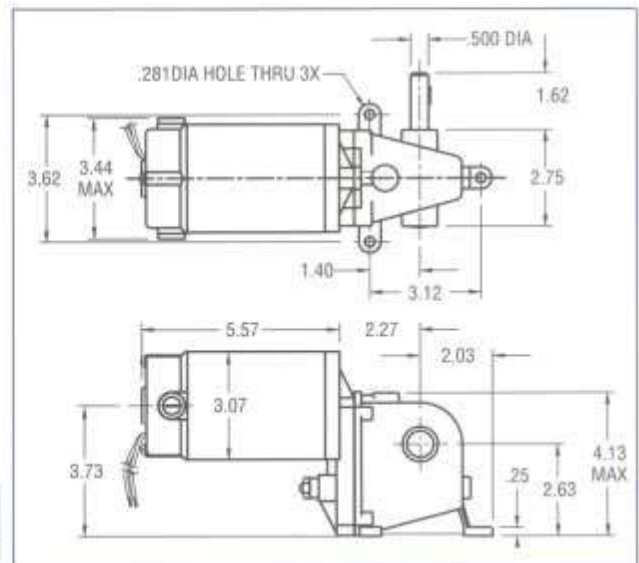


Input Motor	Gearmotor Characteristics	Standard Gear Ratios			
		105	210	450	900
3000 RPM	F.L. Speed (RPM)	30	15	7	3.5
	F.L. Torque (in-lbs.)	23	37	100	155

Options • Available 12 - 180 Volt • Replaceable Brushes • Internal Brushes • Integral Speed Control

VW33

Overhung load 200 lbs.,
1" from output boss



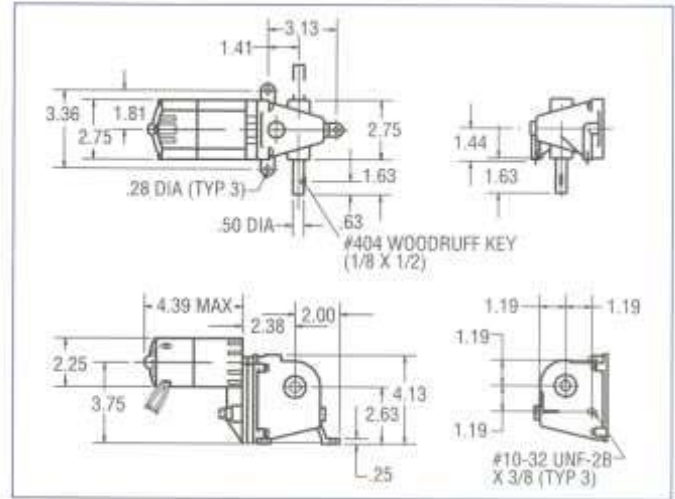
Input Motor	Gearmotor Characteristics	Standard Gear Ratios					
		37	70	167	275	525	1255
3300 RPM	F.L. Speed (RPM)	89	47	20	12	6.6	3
	F.L. Torque (in-lbs.)	38	72	172	129	250	250
1650 RPM	F.L. Speed (RPM)	45	24	10	6	3.4	1.5
	F.L. Torque (in-lbs.)	64	122	250	219	250	250

Options • Available 12 - 90 Volt • Replaceable Brushes • Internal Brushes • Integral Speed Control
• Double Output Shaft • Electro-Magnetic Brake



VW03 AC/DC

Overhung load 200 lbs.,
1" from output boss



Input Motor	Gearmotor Characteristics	Standard Gear Ratios					
		52	100	238	391	747	1787
5200 RPM	F.L. Speed (RPM)	100	50	21	12.8	6.7	4
	F.L. Torque (in-lbs.)	27	45	100	110	162	250

Options • Overload Protection • Double Output Shaft • Replaceable Brushes