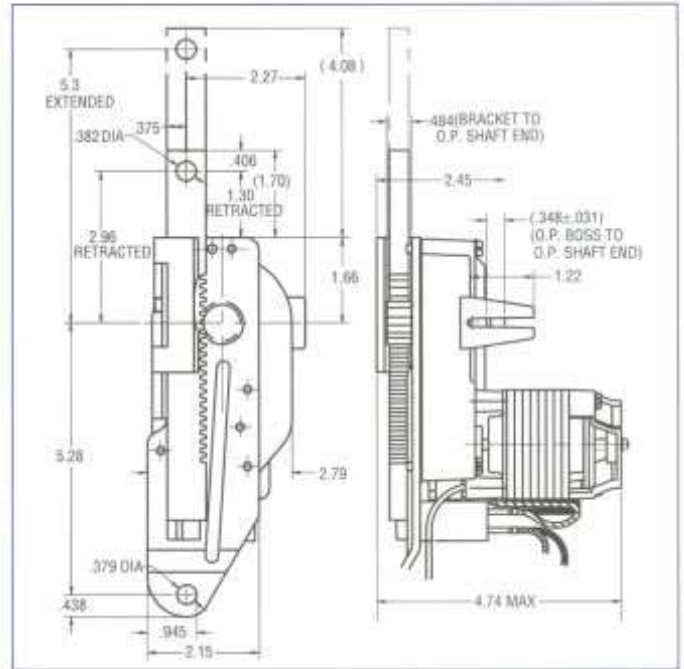


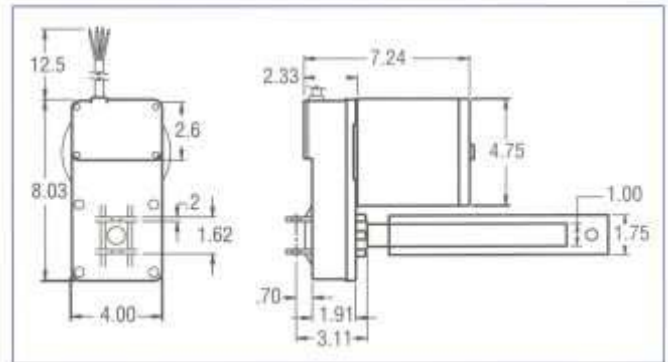
Rack & Pinion



Input Motor	Gearmotor Characteristic	Total Ratio (Gear Ratio/Rack Ratio)		
		108	215	323
2 Pole 60 Hz.	F.L. Speed (in-min.)	19	9	6
	F.L. Thrust (lbs.)	250	500	750

Options: • P.S.C. Motor • Brake

VW02



Input Motor 4 Pole, 60 Hz.	Standard Gear Ratios					
	70	84	112	127	153	204
Full Load Speed (in-min.)	23	19	15	13	11	8
Full Compression Thrust (lbs.)	1068	1175	1282	1800	1800	1800
Full Tension Thrust (lbs.)	1000	1000	1000	1000	1000	1000
Starting Thrust (lbs.)	1068	1175	1282	1942	2137	2331

Options: • P.S.C. Motor • Overload Protection • Limit Switches • Potentiometer
• Extension Tube • Acme Nut Mount • Rear Shaft Extension