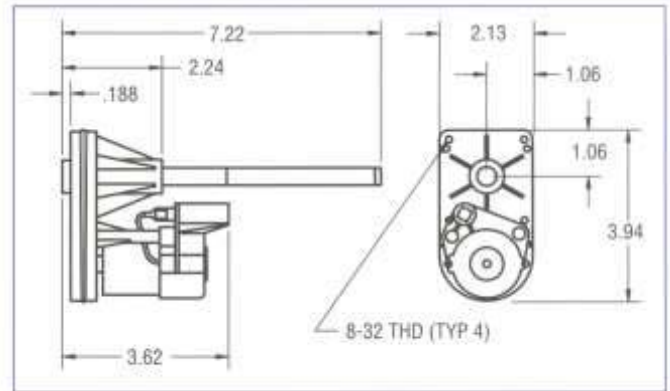




VW96

Overhung load 10 lbs.,
.75" from output boss



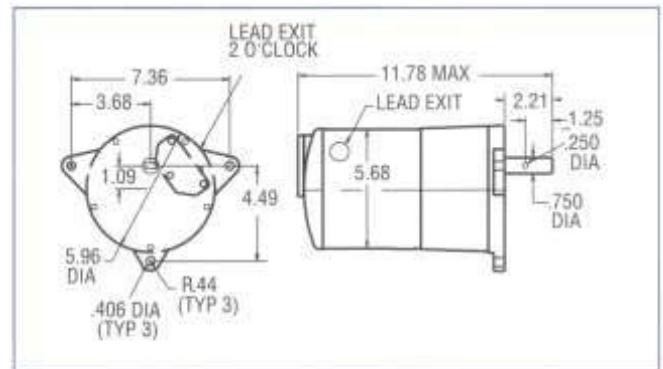
Input Motor	Gearmotor Characteristic	Standard Gear Ratios	
		51	102
2550 RPM	F.L. Speed (RPM)	50	25
	F.L. Torque (in-lbs.)	2	4

Options • Double Output Shaft



VW44

Overhung load 400 lbs.,
.75" from output boss



Input Motor	Gearmotor Characteristic	Standard Gear Ratios	
		31	49
4 Pole 60 Hz.	F.L. Speed (RPM)	56	36
	F.L. Torque (in-lbs.)	65	100

Options • Shaded Pole • P.S.C. Motor • Split Phase • Capacitor Start • Brake • Double Output Shaft
• Conduit Box • 3-Phase • Overload Protection